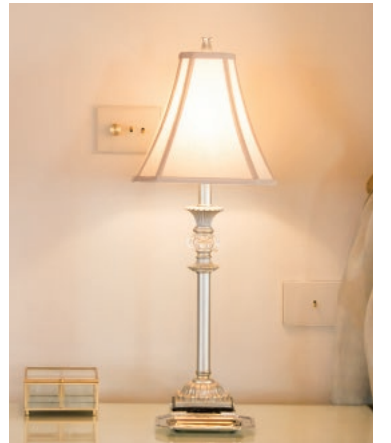
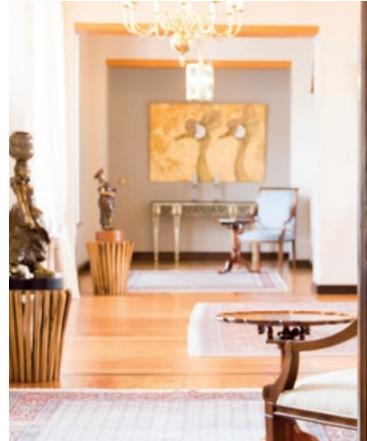
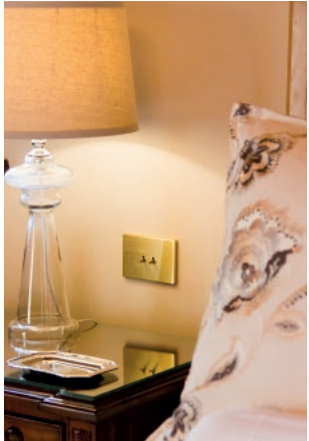


LUMEN8





BESPOKE SWITCHGEAR

Lumen8 came into existence way back in 1998 when industrial designer Ian Munro was commissioned to design and manufacture light fittings for Heritage Square which was being developed in Cape Town at the time.

This led to more lighting designs but it soon became evident that there was a need to design better looking wall switches to compliment the light fittings. Gradually well designed switchgear became more and more in demand, so much so that we now specialize in formulating the best switch and socket options for individual requirements.

Whether the project is a game lodge, boutique hotel or unique residence, we have come to understand the complexities involved in the selection of light switches, dimmers and socket outlets. Functional and aesthetic considerations are taken into account to determine the best outcomes for various interior styles.

We manufacture our special bespoke switchgear in Paarden Eiland, Cape Town. This is also our administrative headquarters with additional showrooms in Cape Quarter, Cape Town and Kramerville, Johannesburg.



LUMEN8



Q - B I C

Inspired by the inherent beauty and honesty of precision engineering

Form is dictated by function resulting in a minimalist no-frills design with crisp clean lines that give these cover plates the edge, while toggle levers and countersunk screws can enhance the industrial aesthetic.





LUMEN8

ELEMENT

Influenced by the elegant opulence of art deco design

The generously rounded edges and plush finish, reminiscent of a bygone era, requires specialised hand finishing that makes each cover plate truly unique.





LUMEN8

ICE

The elegance of modern design combined with the playfulness of pop art

The acrylic finish creates the appearance of a cover plate encapsulated in melting ice cubes.
White and mint come standard, with the flexibility of adding your choice of colour.





LUMEN8

RAW

Refined design reflecting the textures and beauty of nature

Materials suggestive of raw stone and cast concrete structures prove inspiration for this range. The bevelled edges echo the form while the shadow line creates a floating appearance.



LUMEN 8



GHOST

A ground-breaking design

An industry-first switchgear system where the cover plate is situated flush with the wall. This can allow for the cover plate to blend in with the wall, giving rise to the name "Ghost". This is not to say that a contrasting colour can't be spectacular.

This range does require extra care and builders should be made aware of the installation requirements.



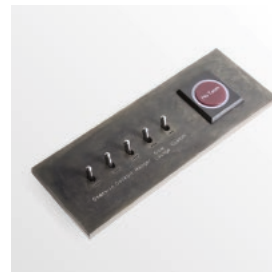
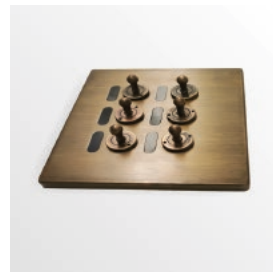


LUMEN8

CUSTOM

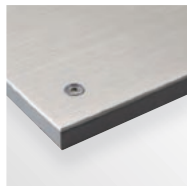
Expertly designed and beautifully finished to compliment your beautiful spaces

From switches for luxury yachts to New York style industrial lofts, we've been known to make the impossible happen.



BESPOKE OPTIONS

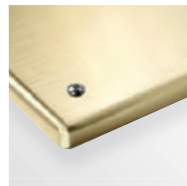
COVER PLATES & FINISHES



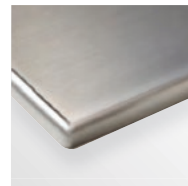
Q-bic (Screw-on)



Q-bic (Clip-on)



Element (Screw-on)



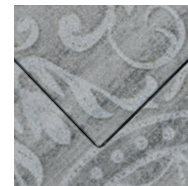
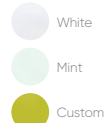
Element (Clip-on)



Raw (Clip-on)



Ice (Clip-on)



Ghost



Single



Double



Triple



White



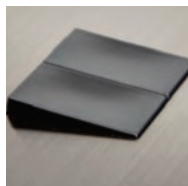
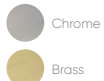
Black

LABELS

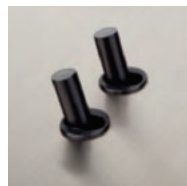
LEVERS



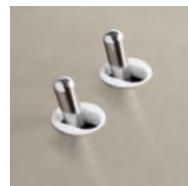
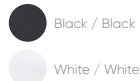
Toggle



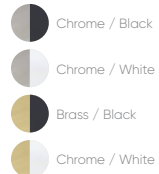
Modular



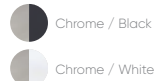
Pod



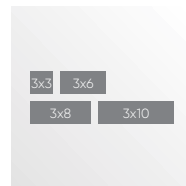
Pod (Luxury)



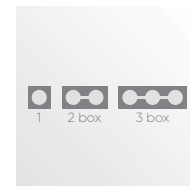
Special Edition



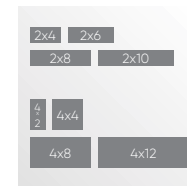
WALL BOXES



UK



Germany



South Africa

STYLE



Modular

Levers and sockets are interchangeable, allowing for configurations to be easily altered. Although less costly, this versatility could be seen as an aesthetic compromise when compared with the Component option.



Component

Levers and sockets require dedicated cover plates and back plates. In this case the improved aesthetic comes at a higher cost and reduced flexibility when changes are required.

CONTACT US



Lumen8 Admin, Factory & Show Room

Unit 26, Rosbur Park, Neptune Street, Paarden Eiland, Cape Town | +27 21 510 0702

Sales Manager: brandon@lumen8.co.za | +27 743 600 937

Sales Consultant: hein@lumen8.co.za | +27 746 923 253

Internal Sales: lauren@lumen8.co.za

Cape Show Room

Shop 31, Cape Quarter Mall, 27 Somerset Road, Greenpoint | +27 21 418 2909

Assistant: donovan@lumen8.co.za | +27 21 418 2909

Johannesburg Show Room

22 Commerce Crescent East, Kramerville, Sandton | +27 11 463 1816

Sales Consultant: karmen@lumen8.co.za | +27 834 017 474

Sales Consultant: chase@lumen8.co.za | +27 826 562 822

Agents / Distributors

East London

pierre@gloelec.co.za | +27 437 430 752

Port Elizabeth

chris@gloelec.co.za | +27 414 872 398

George

davidvw@gloelec.co.za | +27 448 714 454

www.lumen8.co.za